



### Headline Statistics

WCWSS DAM STORAGE  
(%)

63.7

WEEKLY DAM LEVEL CHANGE  
(%)

-2.30

AVERAGE TOTAL  
DAILY WATER USE  
(MLD)

1034

### Water Resource Status

WATER RESOURCE STATUS	MEANING OF CURRENT STATUS
Early Drought Caution	<p>'Continued water wise use encouraged due to lower than anticipated dams level, cautioning possible start of a drought cycle'</p> <p>The main dams supplying the City are approximately 15% lower than last year - as shown on Page 3. While there is no immediate reason for concern and no expected restrictions for the next year, this updated drought risk status is part of the City's proactive approach to monitoring for and managing future droughts. This status and the corresponding actions are discussed in the Water Outlook 2023. The latest analysis has been incorporated into the dashboard update</p> <p>The Water Resource Status will be updated again in February 2026.</p>

### Water Production from Different Sources

MAJOR DAMS  
(MLD)

1023

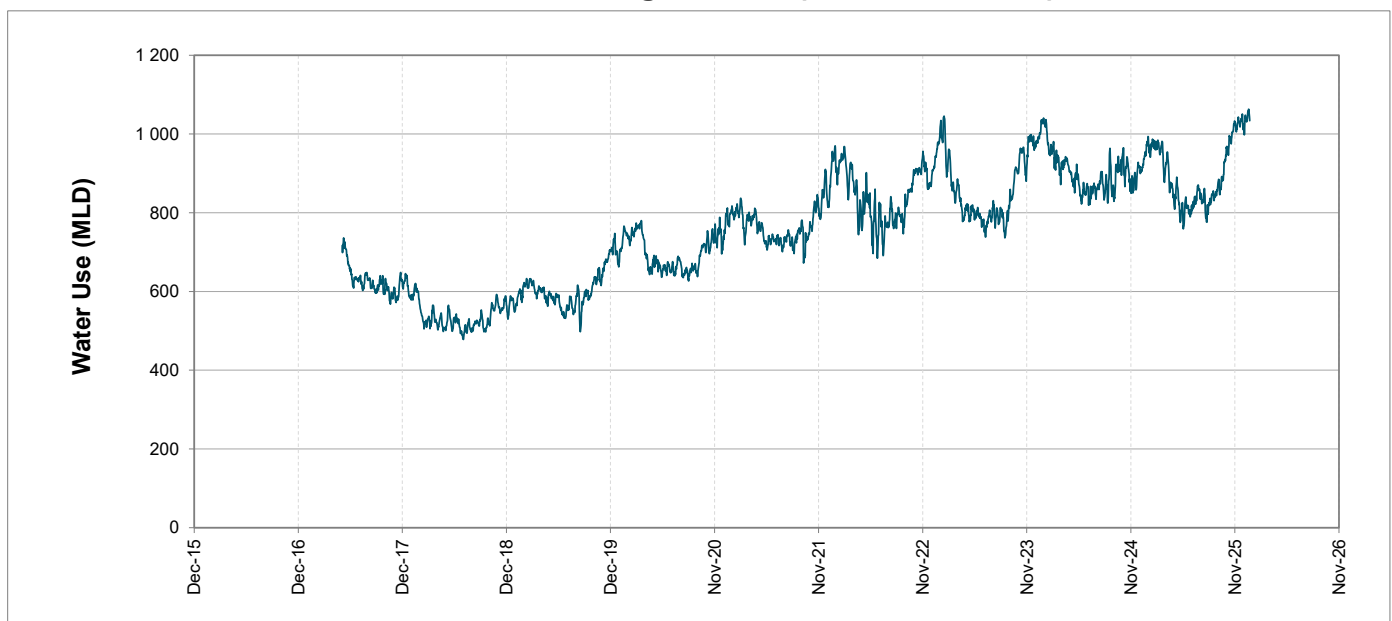
MINOR DAMS  
(MLD)

4

GROUND WATER  
AND SPRINGS  
(MLD)

7

### Overall Water Usage Trend (2010 - Present)



WCWSS means Western Cape Water Supply System

MLD means million litres per day

More information on Water Saving and Restrictions is available on the City of Cape Town's 'ThinkWater' website

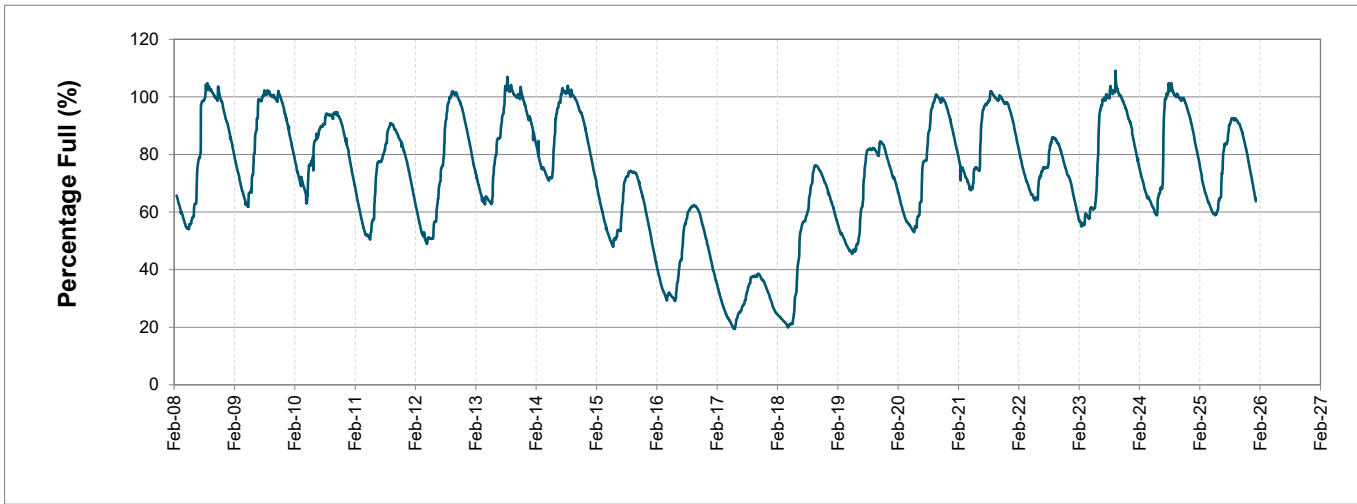
Water Stored in Major Dams (WCWSS)

Overall Percentage Full63.7%

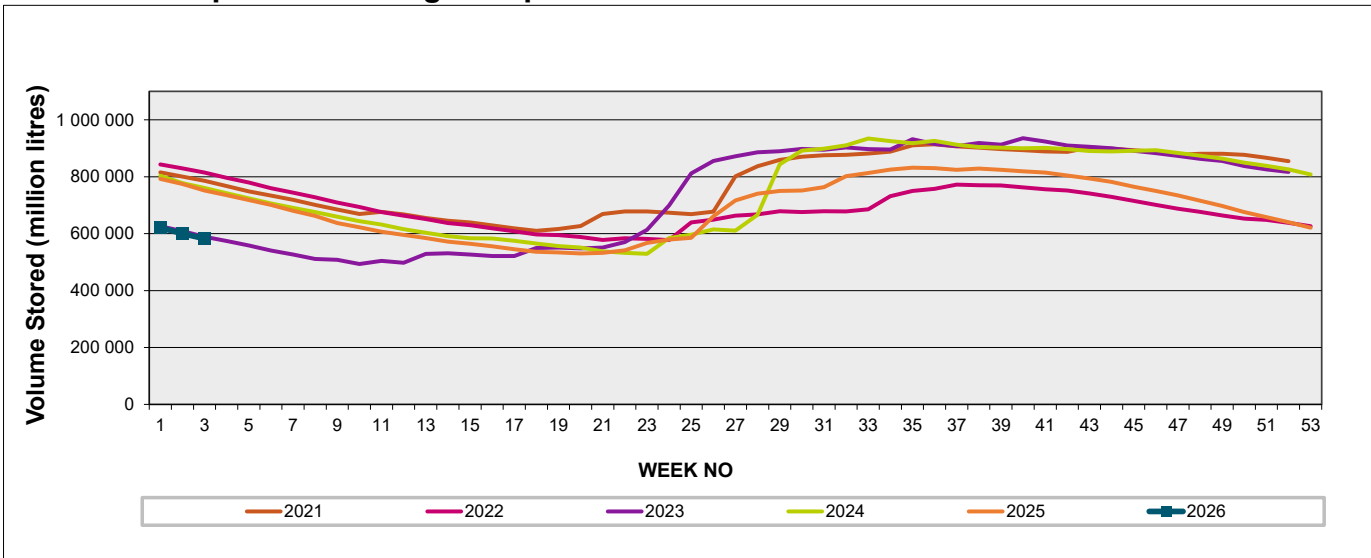
Weekly Change-2.3%

MAJOR DAMS (WCWSS)	STORAGE						
	CAPACITY	%	%	%	%	%	%
	MI	21 January 2026	Previous week	2025	2024	2023	2022
BERG RIVER	130 010	65.5	68.1	85.2	86.6	81.1	91.1
STEENBRAS LOWER	33 517	60.2	63.4	76.5	79.9	65.1	84.7
STEENBRAS UPPER	31 767	80.4	83.8	95.7	94.3	91.3	94.4
THEEWATERSKLOOF	480 188	58.6	60.8	83.2	81.0	60.8	91.6
VOËLVLEI	164 095	72.4	74.6	83.9	79.3	50.2	85.4
WEMMERSHOEK	58 644	70.8	71.8	78.0	94.3	77.8	80.5
TOTAL STORED	898 221	572 548	592 700	749 881	743 451	576 172	804 171
% STORAGE		63.7%	66.0%	83.5%	82.8%	64.1%	89.5%

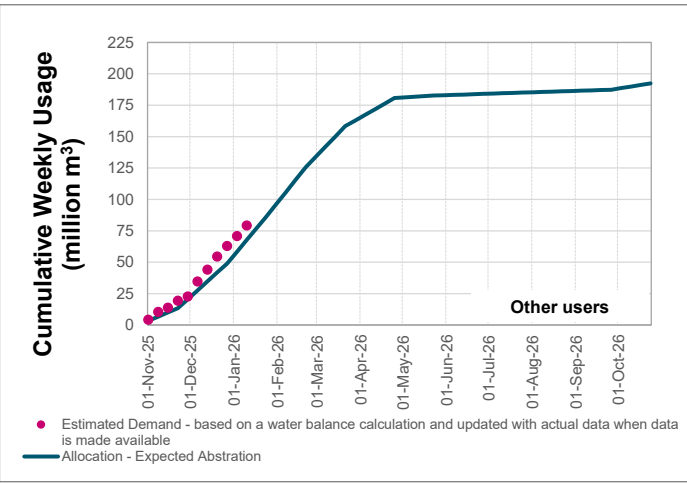
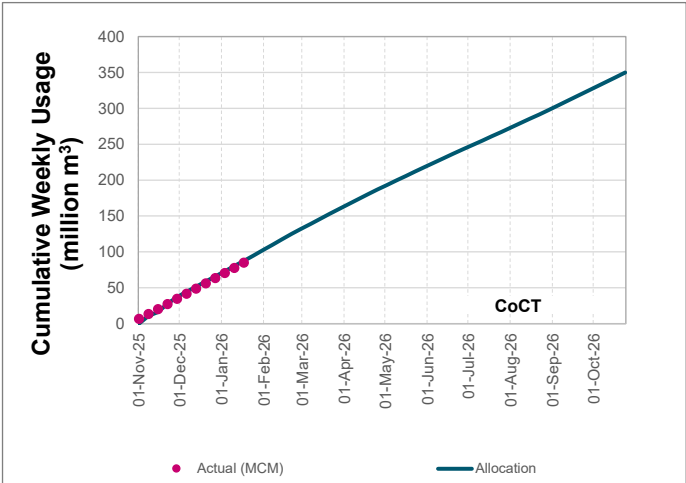
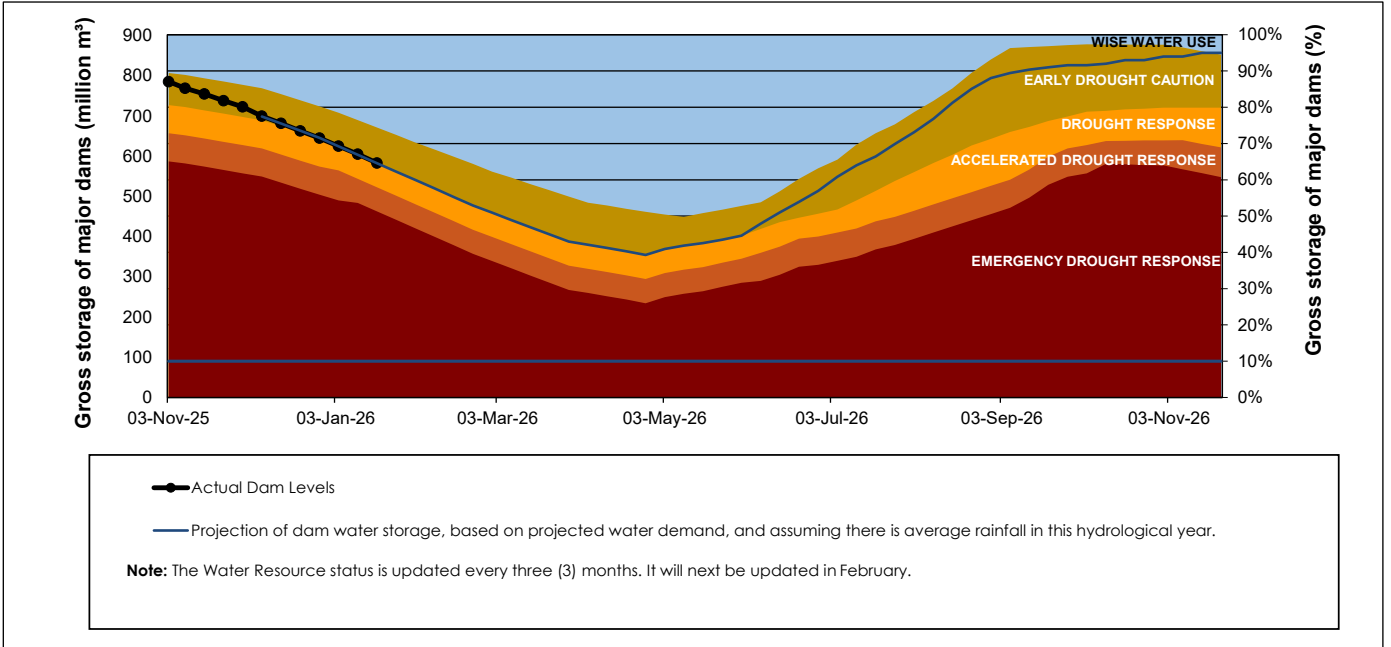
WCWSS Storage Record (2008 - Present)



WCWSS Comparative Storage Graph



Projected WCWSS Dam Storage Levels



Water Stored in Minor Dams

Overall Percentage Full	50.8	Weekly Change	-0.11
-------------------------	------	---------------	-------

MINOR DAMS	STORAGE						
	CAPACITY	%	%	%	%	%	%
	MI	21 January 2026	Previous week	2025	2024	2023	2022
ALEXANDRA (Table Mountain)	126	34.9	34.7	43.9	46.2	48.8	72.6
DE VILLIERS (Table Mountain)	243	57.7	57.7	91.0	98.1	81.2	61.7
HELY-HUTCHINSON (Table Mount)	925	14.2	13.1	60.6	38.9	7.3	43.0
KLEINPLAATS (Simon's Town)	1 368	42.9	46.1	31.2	67.7	38.5	75.5
LAND-EN-ZEEZICHT (Helderberg)	451	83.0	81.3	90.8	76.1	86.7	92.5
LEWIS GAY (Simon's Town)	182	52.6	48.2	78.0	59.8	63.6	85.7
VICTORIA (Table Mountain)	128	46.3	46.3	92.7	79.6	80.6	59.0
WOODHEAD (Table Mountain)	954	84.5	83.4	47.6	66.3	86.6	65.3
Total Stored	4 377	2223.5	2228.5	2379.4	2735.5	2277.6	2908.0
Percentages stored		50.8	50.9	54.4	62.5	52.0	66.4

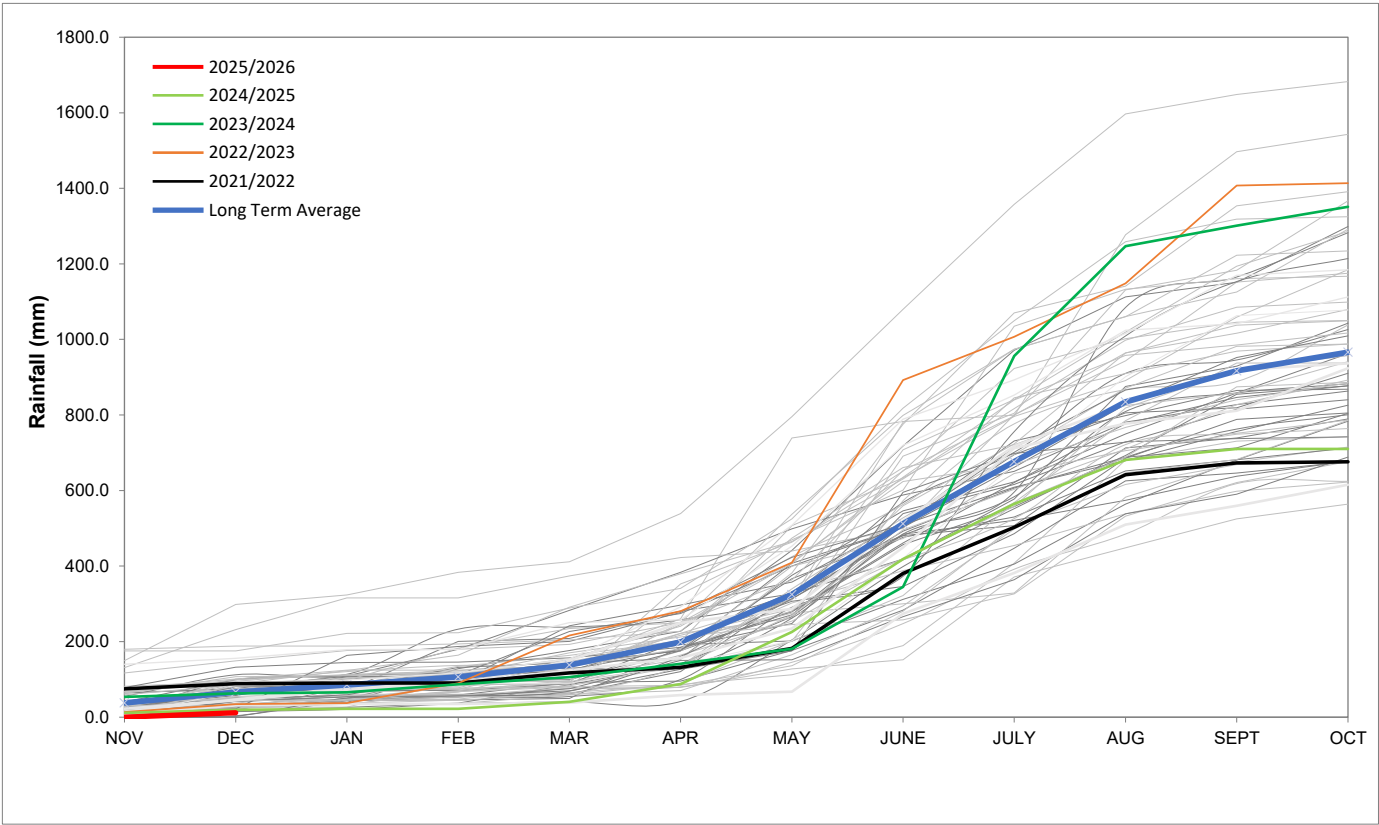
# Rainfall Recorded

RAINFALL (mm)	14-Jan	15-Jan	16-Jan	17-Jan	18-Jan	19-Jan	20-Jan	Jan	
								Total*	LT Average
Blackheath Upper	2.0	0.0	0.0	0.0	0.0	0.0	0.0	2.0	15.3
Brooklands	0.0	0.0	2.0	0.0	0.0	0.0	0.0	4.0	27.7
Newlands	2.5	0.0	0.0	0.0	0.0	0.0	0.0	2.5	37.4
Steenbras	0.3	0.0	0.0	2.0	0.0	0.0	0.0	0.0	29.5
Table Mountain (Woodhead)	15.0	0.0	0.0	0.0	0.0	0.0	0.0	46.0	52.7
Theewaterskloof	11.0	1.1	0.0	0.0	0.0	0.0	0.0	16.1	24.9
Tygerberg	0.9	0.0	0.0	0.0	0.0	0.0	0.0	2.1	13.0
Voëlvlei	1.0	0.0	0.0	0.0	0.0	0.0	0.0	1.2	13.2
Wemmershoek	0.0	0.0	0.0	0.0	0.0	0.0	0.0	0.0	20.6
Wynberg	1.0	0.0	0.0	0.0	0.0	0.0	0.0	1.0	21.2

Notes: \*Total/cummulative rainfall for month indicated above  
LT: Long Term

# Accumulated Monthly Rainfall at Wemmershoek

Note: Wemmershoek station used due to long record and mountainous location



## Drinking Water Quality

SAMPLE PASS RATE		
Month	Water Quality Compliance (%)	Target (%)
Jan-22	99.04	98.00
Feb-22	99.04	98.00
Mar-22	98.99	98.00
Apr-22	98.96	98.00
May-22	98.90	98.00
Jun-22	98.96	98.00
Jul-22	99.46	98.50
Aug-22	99.47	98.50
Sept-22	99.46	99.00
Oct-22	99.47	99.00
Nov-22	99.45	99.00
Dec-22	99.36	99.00
Jan-23	99.36	99.00
Feb-23	99.35	99.00
Mar-23	99.29	99.00
Apr-23	99.24	99.00
May-23	99.24	99.00
Jun-23	99.18	99.00
Jul-23	99.19	99.00
Aug-23	99.14	99.00
Sept-23	99.10	99.00
Oct-23	99.10	99.00
Nov-23	99.04	99.00
Dec-23	99.15	99.00
Jan-24	99.16	99.00
Feb-24	99.12	99.00
Mar-24	99.16	99.00
Apr-24	99.20	99.00
May-24	99.21	99.00
Jun-24	99.26	99.00
Jul-24	99.27	99.00
Aug-24	99.31	99.00
Sept-24	99.33	99.00
Oct-24	99.37	99.00
Nov-24	99.42	99.00
Dec-24	99.42	99.00
Jan-25	99.48	99.00
Feb-25	99.57	99.00
Mar-25	99.61	99.00
Apr-25	99.65	99.00
May-25	99.66	99.00
Jun-25	99.62	99.00
Jul-25	99.69	99.00
Aug-25	99.69	99.00
Sept-25	99.70	99.00
Oct-25	99.70	99.00
Nov-25	99.72	99.00
Dec-25	99.72	99.00

This table shows CCT drinking water quality compliance according to the South African National Standard 241:2015. Compliance, measured against all prescribed chemical and microbiological components, consistently exceeds the very high CCT target of 99%. (Overall compliance percentages of continuous sampling and analysis are released on a monthly basis.